

## OUR ROOTS

WHILE SENIORS IN COLLEGE, WE BECAME CURIOUS ABOUT A FACT WE LEARNED IN CLASS — GOURMET MUSHROOMS COULD GROW ON SPENT COFFEE GROUNDS — AND FELL IN LOVE WITH THE ADVENTURE OF GROWING OUR OWN FOOD.

NOW, WE'RE ON A MISSION TO HELP EVERY FAMILY & CLASSROOM EXPERIENCE THAT MAGIC OF GROWING — NO BIG BACKYARD OR GREEN THUMB NEEDED! WE HOPE YOU JOIN OUR JOURNEY TO GROW, TOGETHER.

### MUCH LOVE

ALEJANDRO & NIKHIL

Co-Founders

#### WHAT WILL YOU GROW NEXT?

Visit [backtotheroots.com](https://backtotheroots.com) and use promo code **GARDENPOT20** to save 20% on any of our other organic windowsill gardens!



## ONGOING CARE

### Using the Olla Watering System

After you have set up your Fabric Garden Pot and transplanted your seedlings, it's time to start using your Olla Watering System!

- Uncork the ollas and fill to the top with water. The porous clay that each olla is made of will slowly release water into the soil, but only when the soil is dry enough to need it — pretty cool, right!?
- Add water to your Fabric Garden Pot when the ollas are nearing empty. Because plants will need different amounts of water based on their variety, maturity, and environmental conditions, filling frequency will vary. Begin by checking the olla water levels about 3 times per week, and adjust to more or less frequent based on the water levels observed.

**PRO TIP:** The ollas will only release water when your plants need it, so there is no harm in filling them up even if they aren't fully empty.

### Fertilizing

- After transplanting, most plant varieties will need fertilizer every 3–4 weeks as they grow, and possibly more during fruiting stages.
- Use a fertilizer that supplies the correct nutrients for your specific varieties of plants and apply as directed.
- **Do not add fertilizer to the water in your ollas, as it will not be released into the soil effectively.**

**PRO TIP:** Water your pot's soil directly whenever you add fertilizer to most effectively provide nutrients to your plants.



# SELF-WATERING FABRIC GARDEN POT

BACK TO THE ROOTS



GROW GUIDE



## BEFORE YOU BEGIN

### What's Included

- 5-gallon Fabric Pot
- Olla Watering System

### What You'll Need

- Transplant seedlings
  - 1 veggie/tomato
  - 2 herbs/leafy greens
- 5 gallons (20 quarts) potting mix

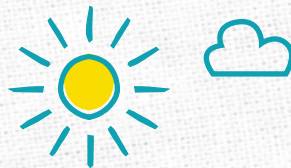
**PRO TIP:** Use a mix formulated for container gardens that drains well. Pre-moisten your potting mix to help prevent transplant shock.

## STARTING FROM SEED?

Back to the Roots recommends transplanting pre-grown starter plants into your Garden Pot. To grow plants from seed in this container, follow separate instructions that apply to the specific seed variety you are planting. This will include watering the soil directly for the first few weeks while plant roots develop and can utilize the Olla Watering System.



## GROW GUIDE



### FIND A SPACE

1. Plan to set up the Fabric Garden Pot close to its final location. This should be in a sunny location that receives no less than 6 hours (but preferably 8+ hours) of direct sunlight per day. Alternatively, you may choose to place your Garden Pot indoors under a grow light.



## SET UP YOUR SYSTEM

2. Add approximately 1.75 gallons (7 quarts) of loosely-packed potting mix to the fabric pot. This should fill the container about 3.5" from the bottom surface.

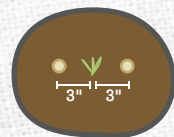


3. Place the Olla Watering System into the fabric pot and position it according to the configuration chart:

**PRO TIP:** Align the top lip of the ollas with the top lip of the fabric pot. Adjust the soil height below each olla in order to align.

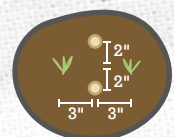
### TOMATO / VEGGIE

Place the seedling directly in the center of the pot, and each olla 3" from the center.

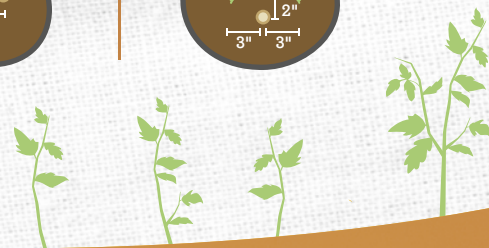


### HERB / LEAFY GREEN

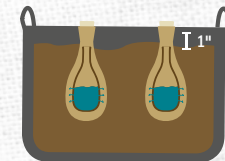
Place each olla 2" from the center of the pot, and each seedling 3" from the center.



- Olla
- ▽ Seedling



4. Continue filling the fabric pot with potting mix to within 1" of the pot lip.



## ADD YOUR SEEDLINGS

5. Dig holes in the location where seedlings will be placed, according to the configuration chart. Create holes slightly larger than your specific transplant seedlings, which will vary based on variety and maturity.

6. Place transplant seedlings in their holes and cover with the displaced potting mix. Add additional potting mix to bury more of the plant stems for structural support. Gently pat down the soil, but do not over-compress. Always follow the specific transplanting instructions that accompany your seedlings, as instructions can vary based on seedling variety and maturity.

**PRO TIP:** Add water directly to each transplant, soaking the soil around each stem. This helps to reduce transplant shock before switching to your Olla Watering System.

